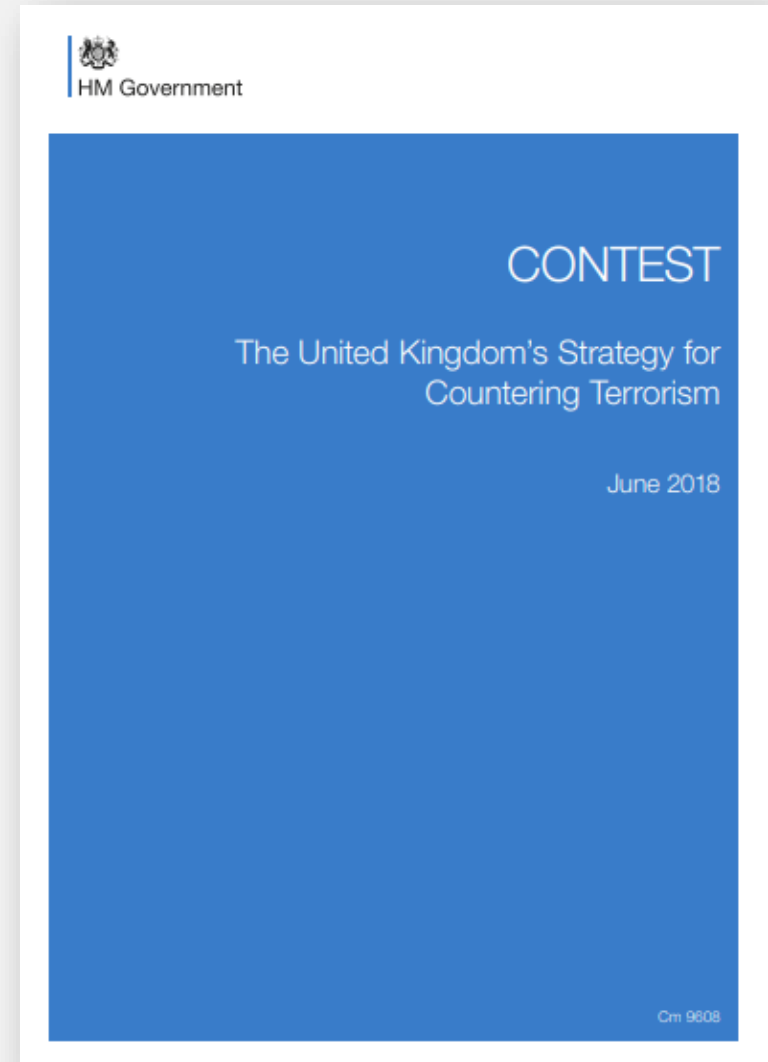


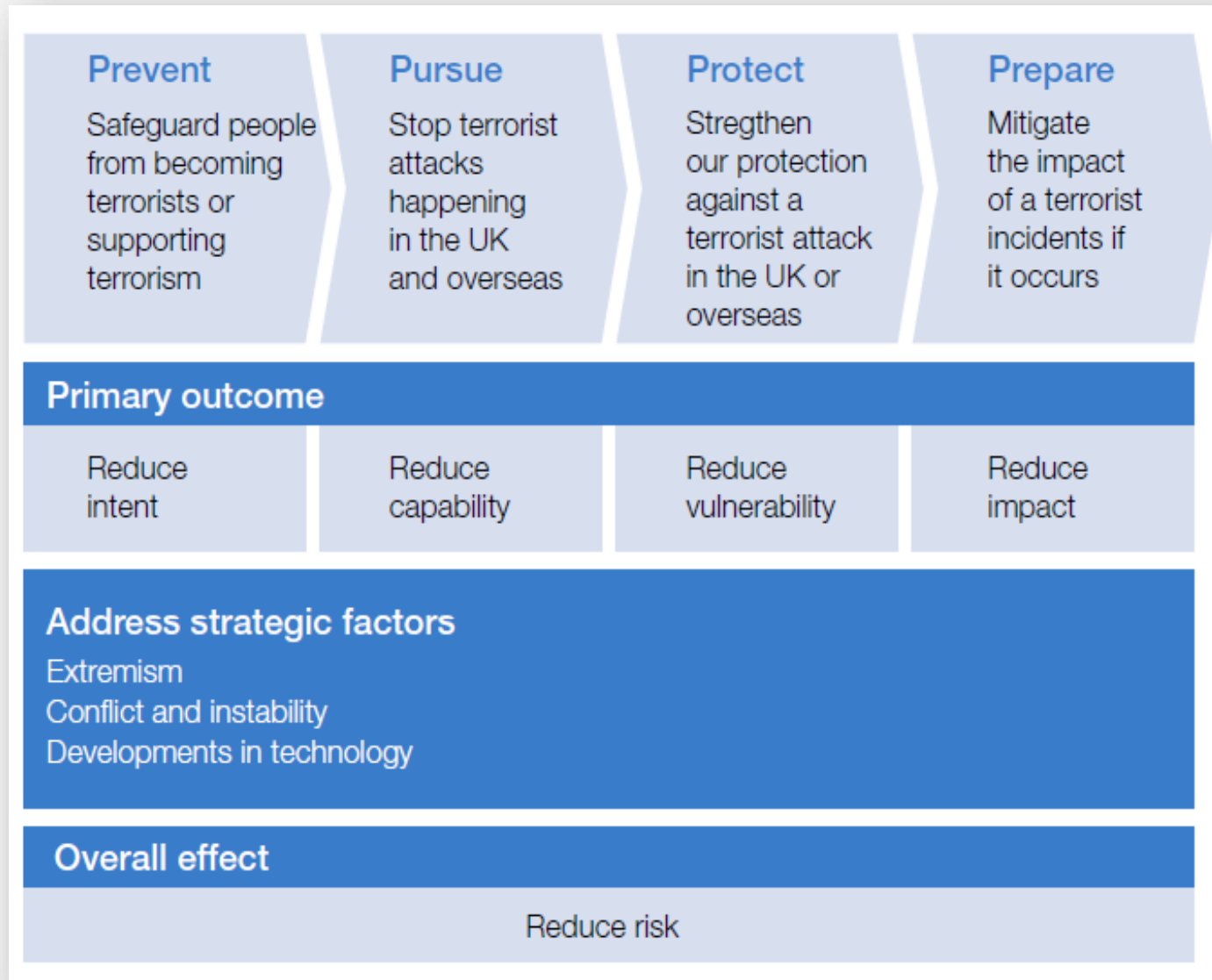
CONTEST STRATEGY

Aims:

“To reduce the risk to the UK and its interests overseas from international terrorism so that people can go about their lives freely and with confidence”



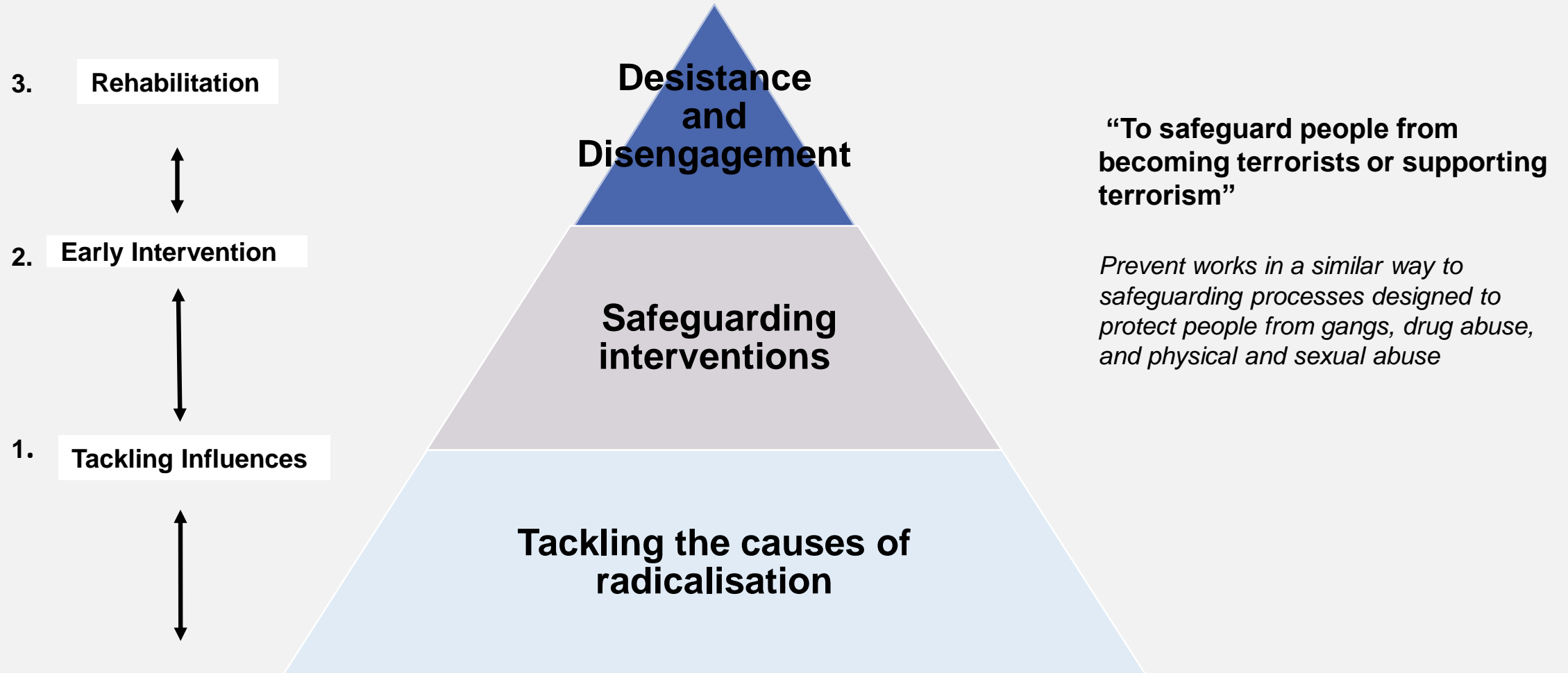
4 P'S



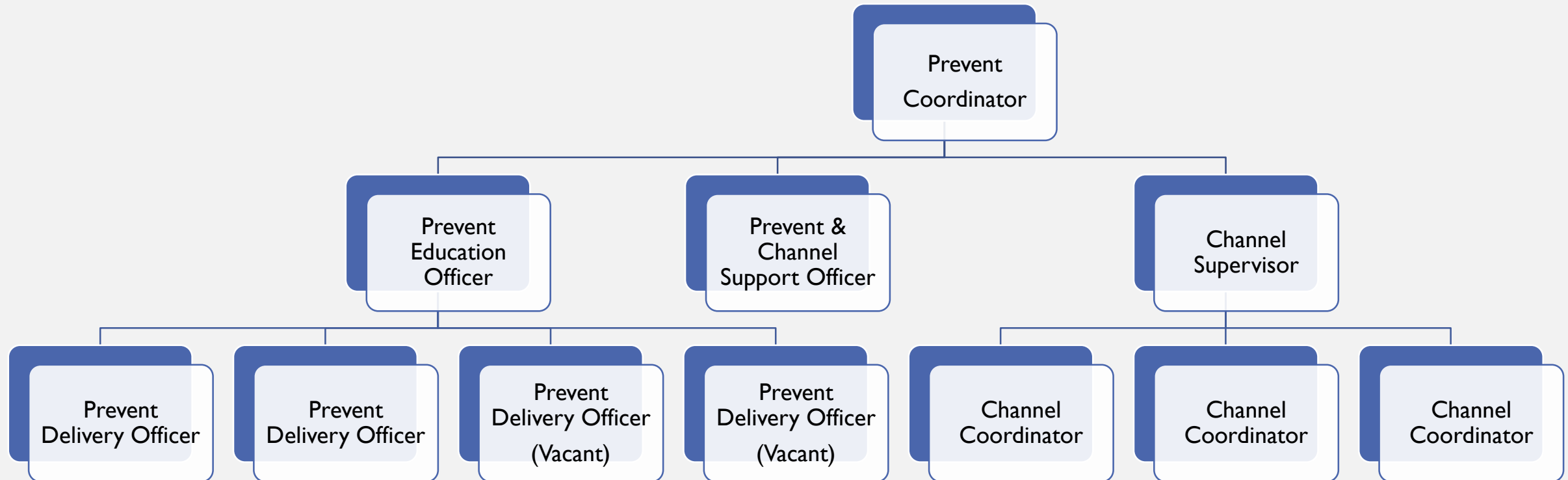
PREVENT OBJECTIVES

1. Tackle the causes of radicalisation and respond to the **ideological** challenge of terrorism.
2. Safeguard and support **Individuals** most at risk of radicalisation through early intervention, identifying them and offering support.
3. Enable those who have already engaged in terrorism to **disengage and rehabilitate**

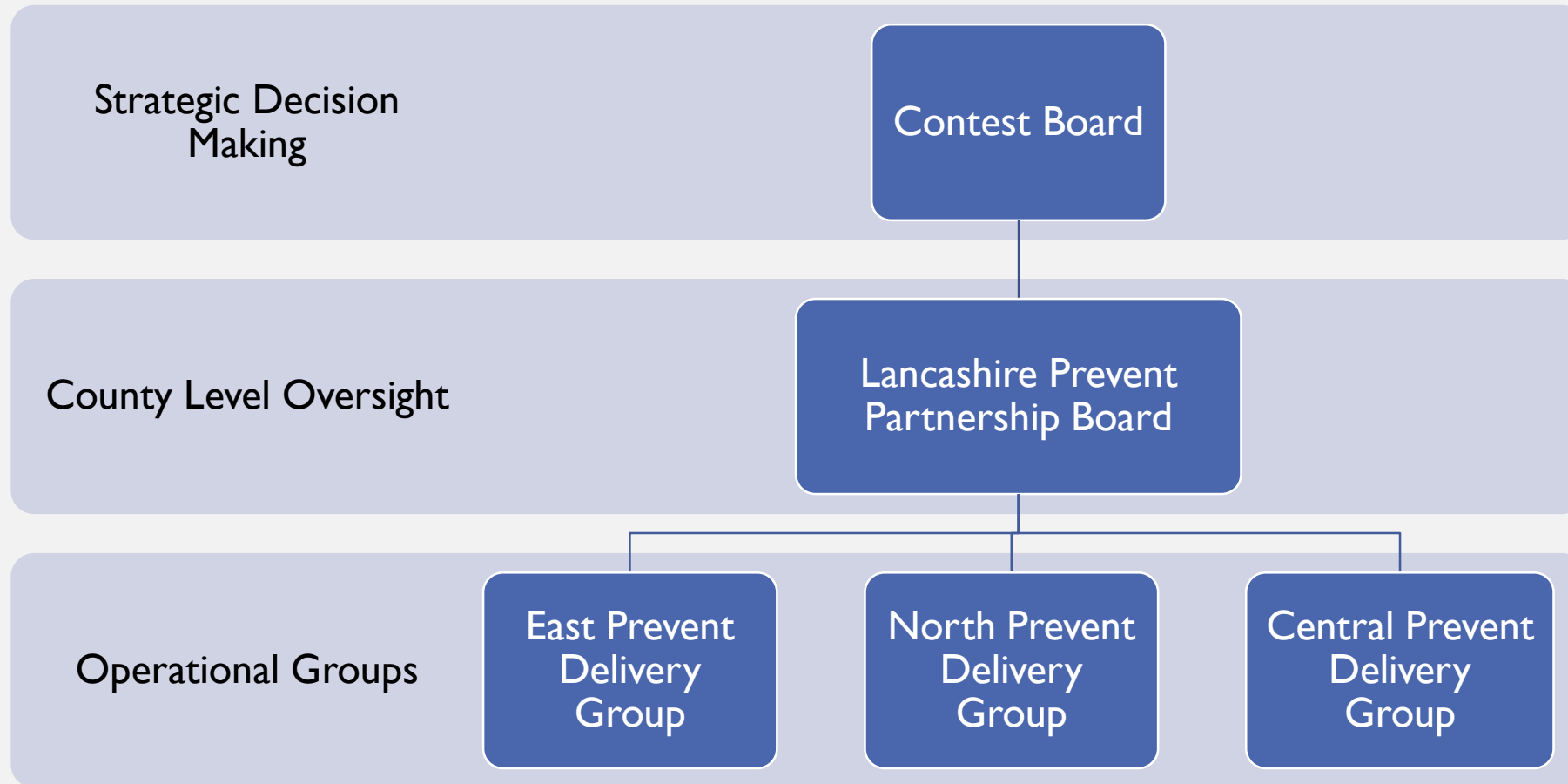
THE PREVENT MODEL



PREVENT & CHANNEL TEAM STRUCTURE



GOVERNANCE ARRANGEMENTS



NATIONAL THREAT LEVEL

- **Critical** – an attack is expected imminently
- **Severe** – an attack is highly likely
- **Substantial** – an attack is a strong possibility
- **Moderate** – an attack is possible, but not likely
- **Low** – an attack is unlikely

Substantial

LANCASHIRE RISK PROFILE

- Counter Terrorism Local Profile
 - Lancashire specific findings
- Threat by ideology
- Thematics
 - Lone Actors
 - Online extremism
 - Mental Ill Health
 - Other



OVERVIEW OF DELIVERY

- Establishing a Centre of Excellence
- Regionalisation pilot
- Governance arrangements
- Lancashire Prevent Strategy & Action Plan
 - Partners: Education, Health, Criminal Justice, Police, Local Authorities etc.
 - CTLP recommendations (mitigating activity against the risk)
 - Training
 - Multi agency Safeguarding / Problem Solving
 - Prevent Duty Compliance
 - Community Engagement
 - Communication Strategy

ROLE OF ELECTED MEMBERS

- LGA Training - Prevent Leadership Essentials for Elected Members
- Understanding the local risk, threat and vulnerability
- Supporting the Prevent Team in local delivery
- Leading & Championing Prevent in the Local Authority area
- Engagement with community/ local groups to myth bust and address concerns
- Highlighting issues to local officers or the Prevent Team